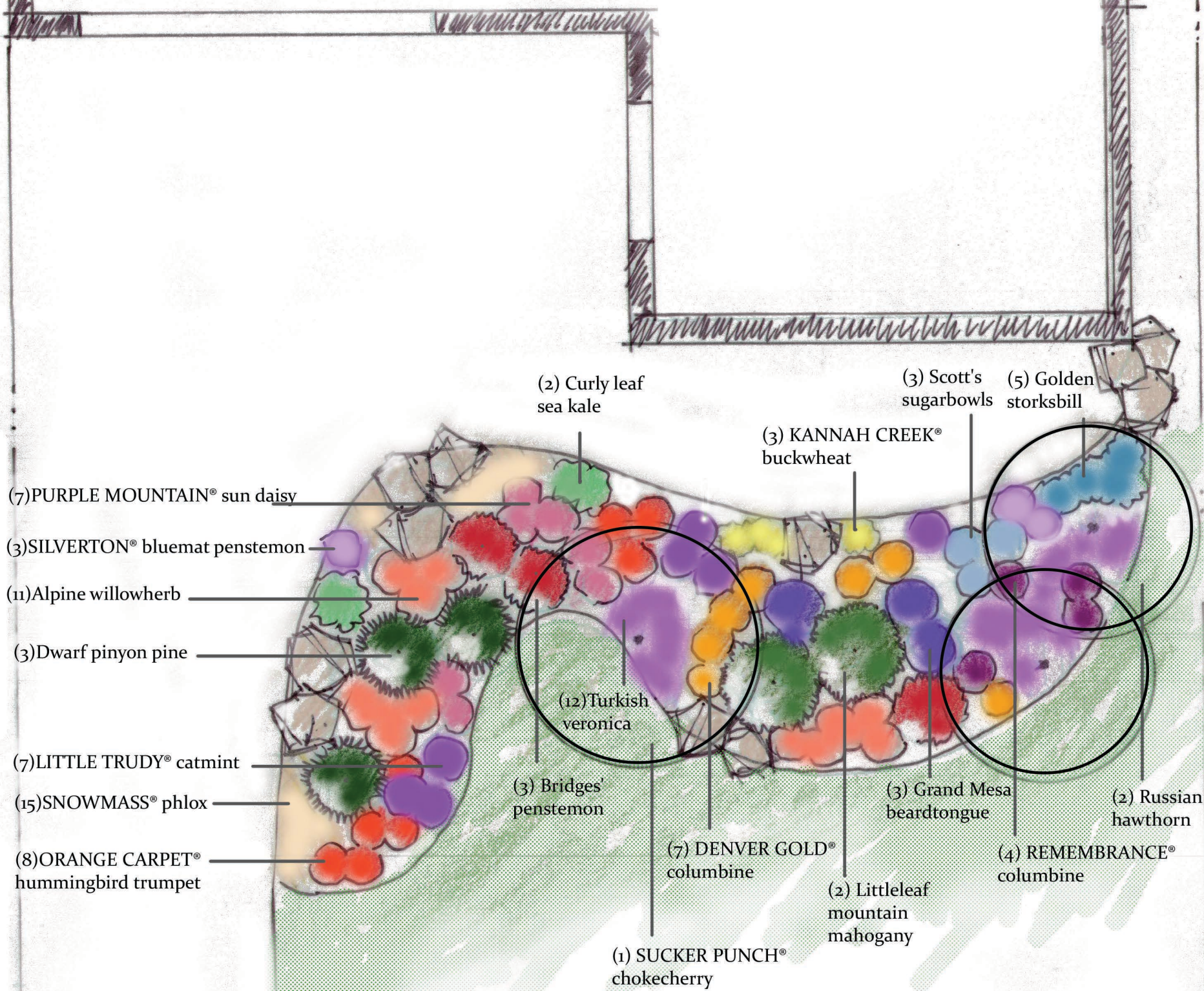


Plant Select®
plant smarter

DENVER BOTANIC
GARDENS

Design by Annie Barrow, Manager of
Horticulture Outreach Programs
annie.barow@botanicgardens.org



HIGH ELEVATION PLANTING DESIGN - FRONTYARD 11' x 17'

This high elevation planting design offers a wide variety of year round texture, spring, summer and fall color plus winter interest for landscapes up to 8125'.



PLANT LIST: Common Name

PURPLE MOUNTAIN® sun daisy (7)
SILVERTON® bluemat penstemon (3)
Alpine willowherb (11)
Dwarf pinyon pine (3)
LITTLE TRUDY® catmint (7)
SNOWMASS® phlox (15)
ORANGE CARPET® hummingbird trumpet (8)
Bridges' penstemon (3)
Turkish veronica (12)
DENVER GOLD® Columbine (7)
SUCKER PUNCH® chokecherry (1)
Littleleaf mountain mahogany (2)
Grand Mesa beardtongue (3)
REMEMBRANCE® columbine (4)
Russian hawthorn (2)
Curly leaf sea kale (2)
KANNAH CREEK® buckwheat (3)
Scott's sugarbowl (3)
Golden storksbill (5)

PLANT LIST: Botanic name

Osteospermum barberiae var. *compactum* 'P005S' (7)
Penstemon linarioides ssp. *coloradoensis* 'P014S' (3)
Epilobium fleischeri (11)
Pinus edulis (3)
Nepeta 'Psfike' PP 18,904 (7)
Phlox bifida (15)
Zauschneria garrettii 'PWWG01S' (8)
Penstemon rostriflorus (3)
Veronica liwanensis (12)
Aquilegia chrysantha (7)
Prunus 'P002S' PP25,767 (1)
Cercocarpus intricatus (2)
Penstemon mensarum (3)
Aquilegia 'Swan Violet & White' (4)
Crataegus ambigua (2)
Crambe maritima (2)
Eriogonum umbellatum var. *aureum* 'Psdawns' (3)
Clematis scottii (3)
Erodium chrysanthum (5)

Visit www.PlantSelect.org/where-to-buy/ to source Plant Select plants or email Director@PlantSelect.org with questions. Designed by: Annie Barrow Manager, Horticulture Outreach Programs annie.barrow@botanicgardens.org